

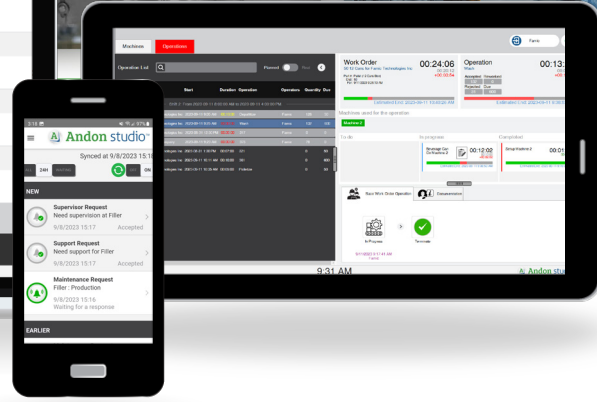


# Andon studio™

## Complete Solution to Optimize Your Production.



Machine	Availability	Performance	Quality	Production
<b>Machine 1</b> Brown Bottle Production 00:31:37	00:05:10 65.71% 18.55% 2.65%	00:05:10 89.21% 89.21% 89.21%	98.82% 97.66% 97.50%	2,150
<b>Machine 2</b> Green Bottle Meeting 00:04:40	00:11:10 85.67% 96.15% 99.46%	100% 100% 100%	86.08% 86.08% 86.08%	121,218
<b>Machine 3</b> 12 Cars Box Production 01:46:31	00:06:29 95.06% 95.06% 95.06%	00:06:09 100% 100% 100%	95.73% 95.73% 95.73%	56,733
<b>Machine 4</b> GEN Carlton Jam 00:04:40	00:05:07 72.73% 72.73% 72.73%	100% 100% 100%	100% 100% 100%	48,397



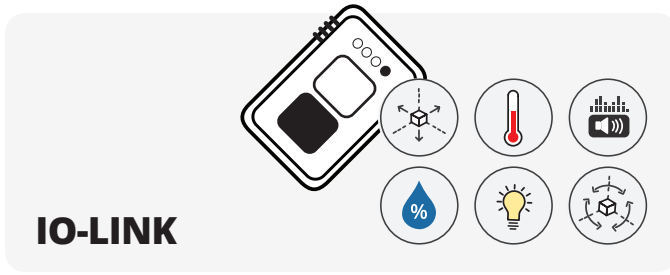
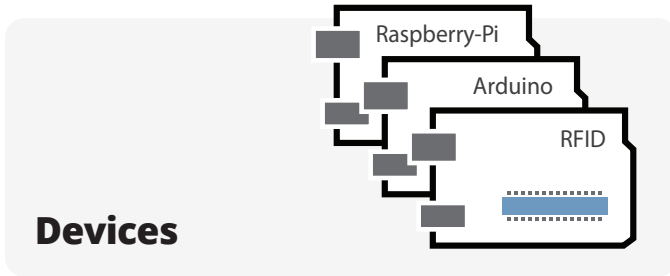
Industry 4.0

A Product of  Famic Technologies Inc.

# INNOVATIVE CONCEPT

## OPC Connectivity

OPC connectivity gives you the advantage of open standards. Andon Studio™ can be connected to external devices such as controllers, PLCs and IOTs.



Planning



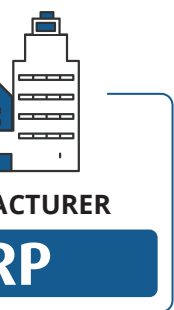
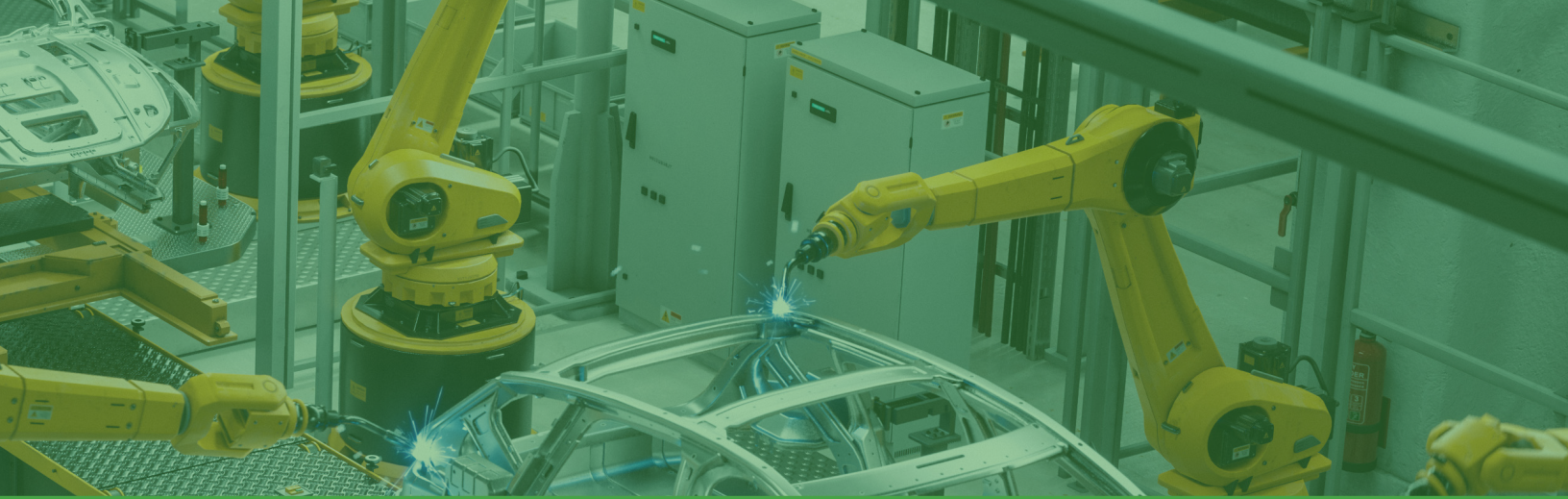
## Data Analysis



OPC AD/AU

Field Devices		Andon Studio™ Variables	
Register	Value	Variable	
Light	200	plant1.Line1.LightSensor	200
Speed	45	plant1.Light1.SpeedSensor	45
Temperature	65	plant1.Light1.TempSensor	65
Counter_1	253	plant1.Light1.TotalCount	253
Timer_1	10	plant1.Light1.CycleTime	10

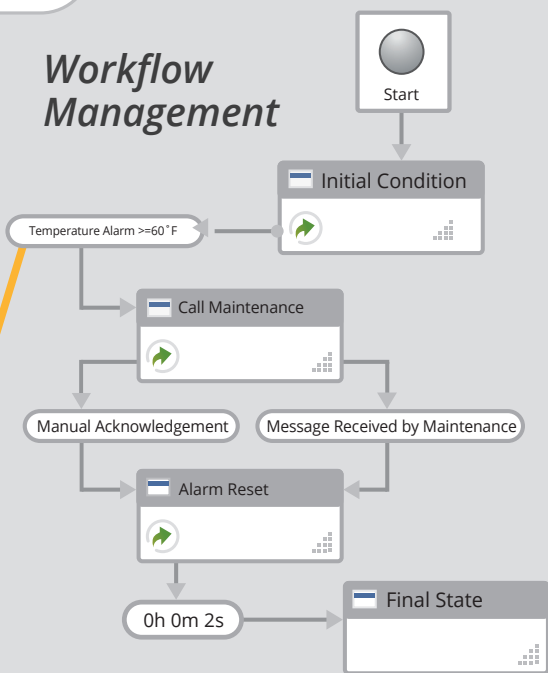




Andon studio™

ables	Value
	00 Lumens
	5 mp/h
	5°F
	53
	0 sec

### Workflow Management



Through the digitalization of the factory as well as its modular and scalable architecture, Andon Studio™ aims to create a global interconnected system which makes it possible to supervise and control manufacturing operations in real time for effective monitoring of productivity.



**Performance Assessment (KPI)**



**Report Generation**



**Alert and Notifications Management**



# BUILT-IN FEATURES

Integration with

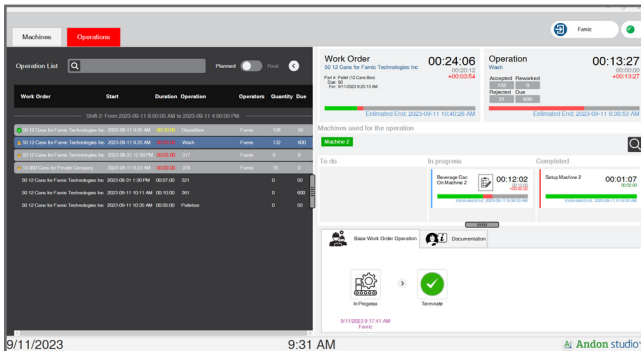


## Integration with ERP Systems

The generic bidirectional synchronizer supports the addition of plugins to connect with any type of system, allowing automatic synchronization of sites, equipments, products, planned work orders and manufacturing operations from the ERP system to Andon Studio™, then returning its real information such as status, duration, production counts, rejects, remanufacturing or any other essential information.

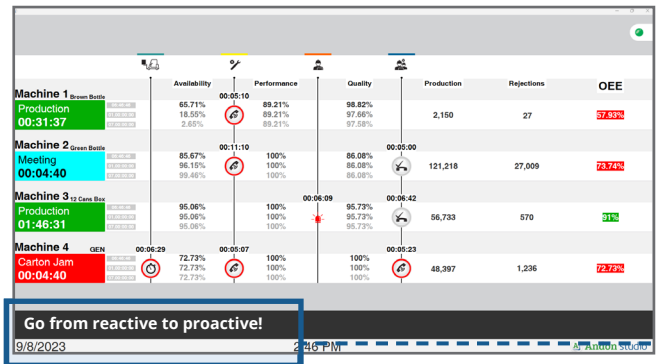
## Manufacturing Operations Handling

- Real-time visualization and management of manufacturing operations received from the ERP by production area.
- Automation of alerts if the execution times of work orders, operations and tasks are overdue.



## Overview of Operations

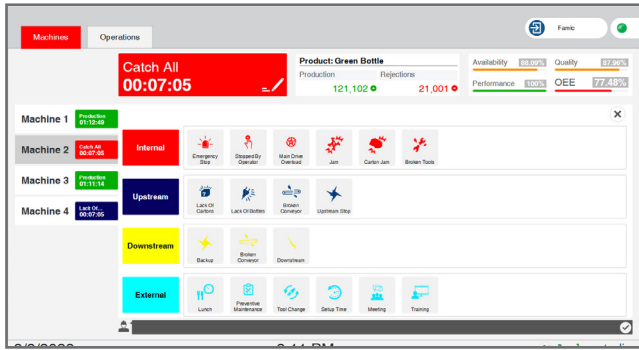
- Equipment and production status, service requests, KPIs, production and rejects are displayed in real-time on centralized display across the factory.
- Vertical display of the timestamp of workflow and request statuses.





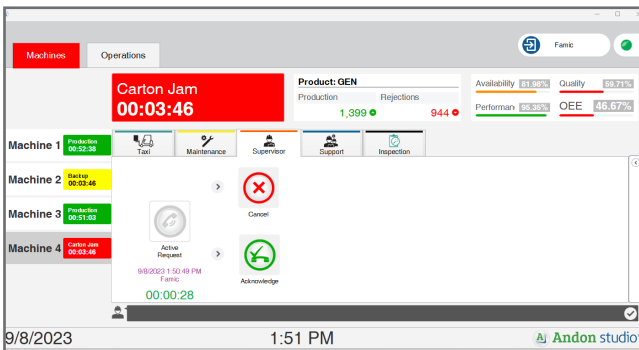
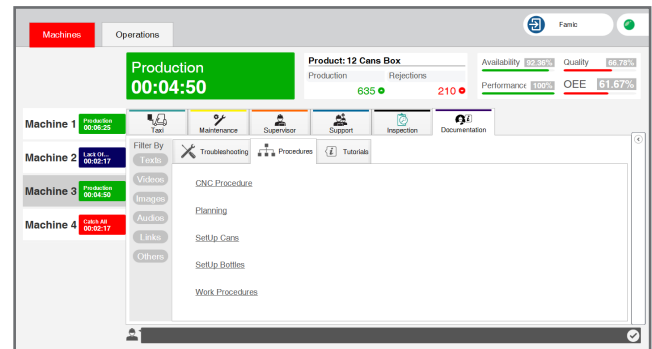
## Efficiently manage service requests

The various stakeholders (operators, technicians, supervisors and others) can easily manage service requests generated manually or automatically using interactive displays and the Andon Mobile™ application.



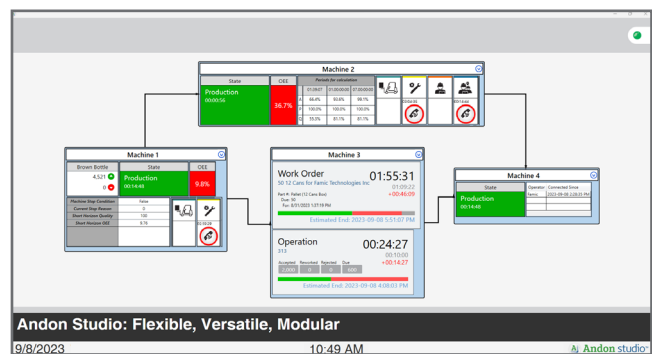
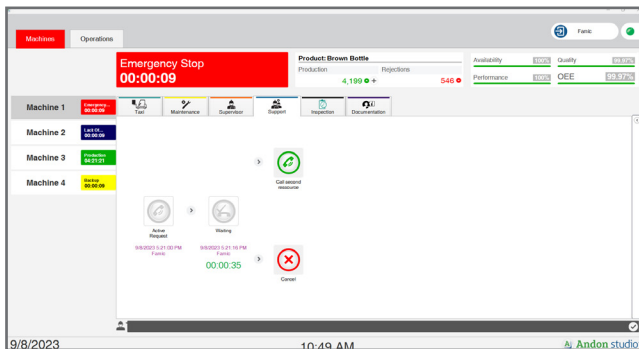
## Eliminate Paper Forms

- Digital and configurable forms can be integrated into processes and completed by stakeholders during audits, inspections or regular procedures.
- Several means available for data entry: digital keyboard, barcode reader, digital camera and more.



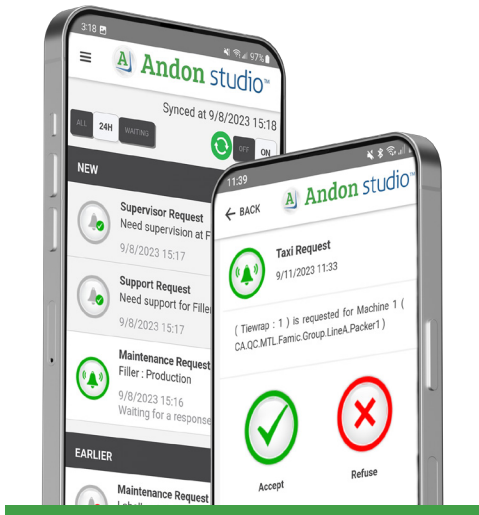
## Easy Design of Custom Dashboards

A dashboard editor allows the system administrator to quickly select information to display in illustrative blocks for each production machine or work cell.



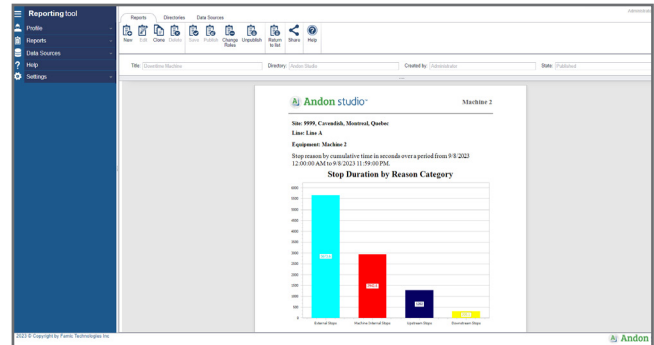
## Receive notifications in real time through the Andon Mobile™ App.

- Fast and configurable transmission in the form of alerts and notifications for each type of request, depending on operational conditions.
- Possibility of tracking calls and managing escalations.



## Generate Customized Reports

In addition to the reports already provided, adding and sharing custom reports, in the form of graphs or tables, is possible.



## Customized Features

New functionalities can be developed to meet specific needs, such as new performance indicators, dashboards or synchronization plugins with CMMS, CAPM, ERP systems, etc.





## Benefit from our consulting services in industrial computing

Our team has always delivered outstanding performances. We have implemented a rigorous development methodology that we apply to every project. This structured approach allows all parties involved to participate in every step of the project ensuring that the solution fulfills our customers' exact needs.

### Modules

- Core (request management, workflow)
- OPC Connectivity
- Customizable Reports
- Configurable Forms
- Contextual Documentation
- Production Management

## We are constantly striving to meet and exceed our clients' expectations. Today, as a result, we are known among industry key players as well as small-scale OEMs

We are committed to providing our customers with the best products and services. Our team of experts is there to help deploy your projects successfully. Whether you have needs in engineering, custom industrial solutions development or even in customizing Andon Studio™, we can support you at any step of your projects.

### Online Demonstration

See Andon Studio™ in action!



[www.famictech.com/en/online-demo](http://www.famictech.com/en/online-demo)



**Famic Technologies Inc.**

[www.famictech.com/en/Products/Andon-Studio](http://www.famictech.com/en/Products/Andon-Studio)

Distributed by

#### **Canada** (Head Office)

Famic Technologies Inc.  
350-9999 Cavendish  
Montreal, QC, H4M 2X5 Canada

☎ +1 (514) 748-8050  
☎ +1 (514) 748-8521



#### **Germany**

Famic Technologies GmbH  
Julius-Hatry-Straße 1  
68163 Mannheim, Germany

☎ +49 (0) 621 39732 456

#### **India**

Famic Technologies Pvt. Ltd.  
Office No. 301, Pentagon Tower-1  
Magarpatta City, Pune-411013, India

☎ +91 20 4003 1020