

# WHO IS TECNNIC

This is Tecnnic: Innovation that moves! We develop innovative technology, not only in products, but in processes, actions, attitudes and ways of communicating and meeting our customers' needs. This turns into movement, which moves not only implements and cranes, but also drives us to always seek more, always the best, to serve you!



@tecnnic

Tecnnic - Inovação que move

Tecnnic - Inovação que move

+55 (48) 3478-6090 +55 (48) 99117-9192

[www.tecnnic.com.br](http://www.tecnnic.com.br)

# PRODUCT CATALOG

CARGO HANDLING



 **TECNNIC**  
Innovation that moves!



# OUR PRODUCTS

## Crane Remote Control



Homologated by  
Anatel

### Applications:



CRANE / MUNCK

### Features:

- Remote control with 100% national technology and manufacturing;
- Up to 6 joysticks controlling up to 8 command slices;
- Up to 6 digital buttons: accelerate, turn on the engine, horn, etc.;
- Self-manufactured magnetic joystick (less wear);
- Graphic LCD with programmable language;
- Long-lasting battery (>30 hours) with USB charging (no charger required);
- Receiver with waterproof case (IP66);

## Remote Control S1



Homologated by  
Anatel

### Applications:



CRANE / MUNCK

### Features:

- Remote control for low cost applications;
- Up to 4 joysticks controlling up to 5 command slices;
- Up to 4 digital buttons: accelerate, turn on the engine, horn, etc.;
- Self-manufactured magnetic joystick (less wear);
- Graphic LCD with programmable language;
- Long-lasting battery (>100 hours) with USB charging (no charger required);
- Receiver with waterproof case (IP66);
- Best cost benefit on the market;

Homologated by  
Anatel

**CONNECT**  
TECNIC

## Integrated Remote Control



### Applications:



CRANE / MUNCK

### Features:

- First remote control with Wi-Fi/cellular internet access;
- Combines remote control, inclinometer and load moment limiter functions;
- Embedded GPS: locator, route log and operation location;
- Configuration and reports via display, application or website;
- Record and report of all operations: date, time, event, value, location, etc.;
- Up to 6 joysticks controlling up to 8 command slices;
- Up to 6 digital buttons: accelerate, turn on the engine, horn, etc.;
- Self-manufactured magnetic joystick (less wear);
- Long-lasting battery (>30 hours) with USB charging (no charger required);
- Comes with signal tower and load moment sensor;

## NR12 Fitting Kit



Homologated by  
Anatel

**CONNECT**  
TECNIC

### Applications:



CRANE / MUNCK

### Features:

- Use in cranes with attached basket;
- First remote control with Wi-Fi/cellular internet access;
- Embedded GPS: locator, route log and operation location;
- Configuration and reports via display, application or website;
- Record and report of all operations: date, time, event, value, location, etc.;
- Up to 6 joysticks controlling up to 8 command slices;
- Up to 6 digital buttons: accelerate, turn on the engine, horn, etc.;
- Self-manufactured magnetic joystick (less wear);
- Long-lasting battery (>30 hours) with USB charging (no charger required);
- Comes with signal tower, cradle/pathing sensors and load moment sensor;

## Inclinometer with Load Limiter



### Applications:



CRANE / MUNCK

### Features:

- Monitors tilt and load moment and blocks the operation accordingly;
- LED signaling tower with audible and visual alarm;
- Configuration and reports via application;
- Record and report of all operations: date, time, event, value, etc.;
- Indication of tilt and load moment on the front of the equipment;

## Basket Leveler



### Applications:



CRANE / MUNCK

### Features:

- Automatic leveler for coupled basket complying with NR12;
- Electric actuator with capacity for 400kgf;
- Built-in sound alarm;
- Emergency button and manual/automatic switch;
- Power supply: 12V (long-lasting built-in battery);
- Simple installation, adapting to any project.

## Load Limiter for Fly Jib



### Applications:



CRANE / MUNCK

### Features:

- Load moment measurement system for cranes with Fly Jib;
- Works in conjunction with the Fly Jib load chart;
- Can be installed together with any project;
- Wireless communication with Tecnnic electronic system;
- Degree of protection IP66;

## Collision Avoidance System



### Features:

- Proximity alert between machines and between machine/people;
- Sound and visual proximity indication;
- Adaptable to any machine;
- Easy installation;
- Long lasting battery;

### Applications:



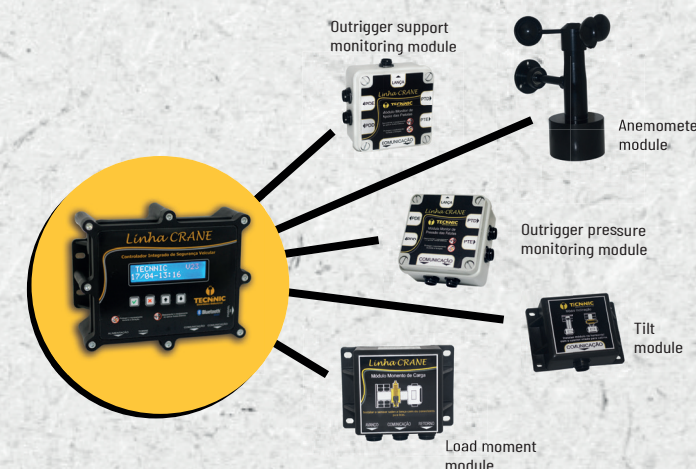
Machine-machine system



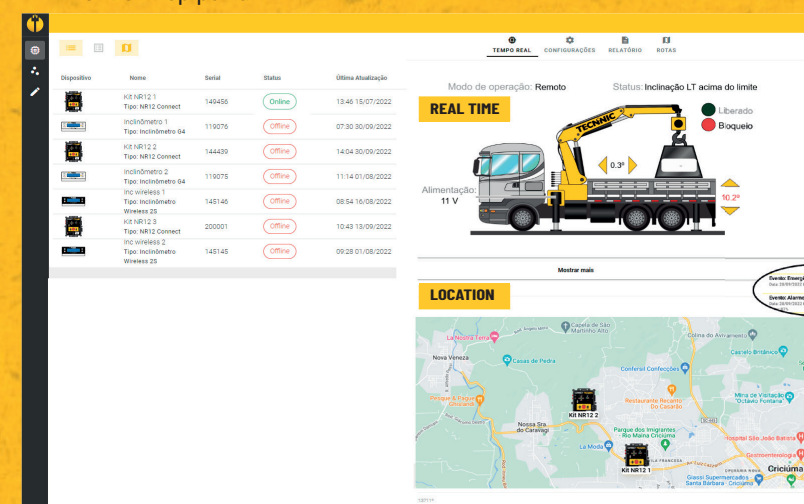
Man-machine system

# CRANE Line

Modular system that can be assembled according to customer needs for requirements on cranes and telescopic cranes:

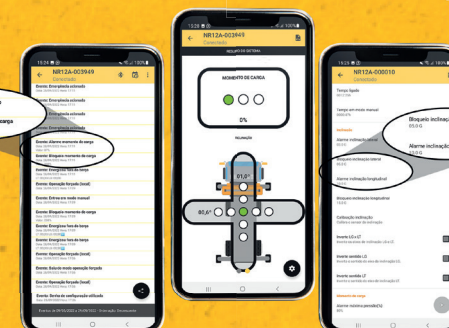


## Connect Desktop portal



Download our app or visit our portal and get access to the full line

**CONNECT**  
TECNIC



Tecnnic Connect  
App